

# WE NEED YOU!

## BECOME ONE OF OUR PILOT OPERATIONS

### YOU ARE:



architect



building owner



developer



contractor



salvage dealer

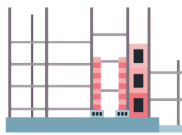


consultant

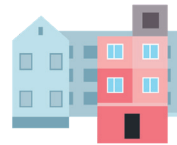


any other stakeholder  
in the construction  
sector

### YOUR PROJECT IS:



A new or renovated  
construction



A soon-to-be-  
demolished building

Would you like to install reclaimed materials or learn how to salvage reusable products in your building project?

**FCRBE CAN ASSIST YOU!**

## WHAT CAN YOU GET?

### Assistance and follow-up for:

- ➔ Salvaging reusable building products in your facilities.
- ➔ Integrating reclaimed elements in your project.



### An introduction to our newly-developed methods and tools:

- ➔ A method to conduct an audit in existing buildings to identify the reuse potential of the materials.
- ➔ Strategies to incorporate reclaimed elements (compatible with public tenders).
- ➔ Directories of professional reclamation dealers.



**The promotion** of your operation.

## HOW WILL IT WORK?

### STEP 1: SELECTION

3  
person.day

We assess together the potential of your ongoing projects to host a pilot operation.

We give you a personalised presentation of the methods and tools that we are developing.

We help you to define an adequate reuse ambition.



### STEP 2: IMPLEMENTATION

8  
person.day

We provide you a light assistance to achieve the reuse ambition: participation to working meetings, site visits, complementary research, occasional phone calls...

You provide us feedback on your project and its progress.

You provide us feedback on the tools and methods you have tested.



### STEP 3: PROMOTION

4  
person.day

We promote the results of your project by writing an illustrated report, as an example of good practice, with descriptions, pictures, relevant data and conclusions.

You commit to authorize the diffusion of the report on the pilot operation by FCRBE after having reviewed it.

# SOME EXAMPLES OF PILOT OPERATIONS



INTEGRATION

- ➔ Designing and installing 1500 m<sup>2</sup> of reclaimed wood for a facade cladding.
- ➔ Organising a public tender for an interior refurbishment requiring to integrate up to 50% of reclaimed products.



EXTRACTION

- ➔ Installing a complete reclaimed ventilation system in a new office building.
- ➔ Conducting a detailed pre-demolition audit of reusable construction products in a large public building.
- ➔ ...and many more!

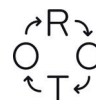
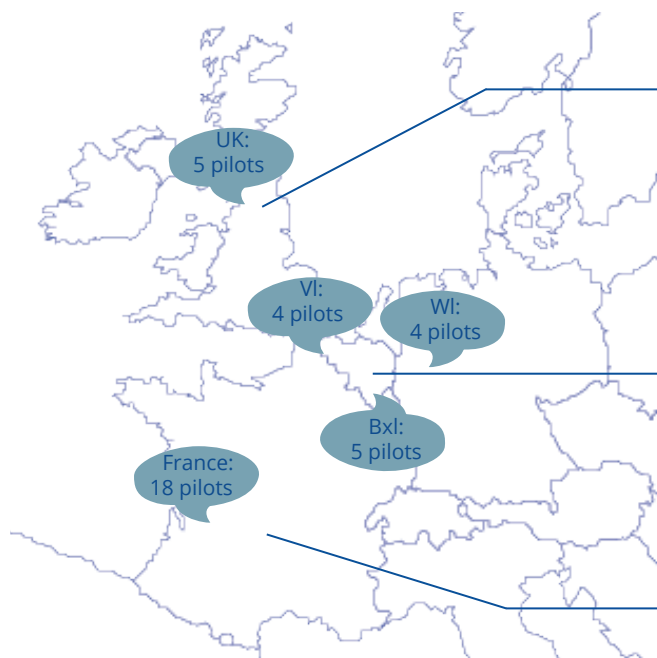
## OUR OBJECTIVE

To increase by 50% the amount of reclaimed building elements being circulated in North-West Europe by 2032, as an alternative to new products and with a high environmental and architectural added value.

We want to achieve this by developing forms of reuse economically viable and scalable.

The pilot operations are a way to test and improve our newly-developed methods.

# WHO WILL FOLLOW THE OPERATIONS?



The operations will take place between November 2019 and October 2021.

## WANT TO JOIN?

Are you interested to participate in this project? Submit your pilot operation to our local contact:

### Belgium:

Construction Confederation  
 petra.ronda@vcb.be (Flanders)  
 jonathan.boulvain@ccw.be (Wallonia)  
 lara.perezduenas@cnc.be (Brussels)

### UK:

Salvo  
 faye@salvo.co.uk

### France:

Bellastock  
 mathilde.billet@bellastock.com

### For general questions:

Rotor (Lead Partner of the project)  
 victormeesters@rotordb.org

MORE INFORMATION ON THE PILOTS AND FCRBE: [HTTPS://WWW.NWEUROPE.EU/FCRBE](https://www.nweurope.eu/FCRBE)

The FCRBE (Facilitating the circulation of reclaimed building elements in Northwestern Europe) project is co-funded by the Interreg NWE programme and runs between October 2018 and January 2022.