

Glad you join our webinar

**“Creating a smart light system: lessons learned from the SMART-SPACE project”**

**Interreg**   
North-West Europe  
**SMART-SPACE**  
European Regional Development Fund

**We start at  
10:00 CET**

Thursday 3 June 2021





Webinar

# "Creating a smart light system: lessons learned from the SMART-SPACE project"

**Interreg**   
North-West Europe  
**SMART-SPACE**  
European Regional Development Fund

Welcome!






# Practical webinar housekeeping

- Turn off your **camera** and **microphone**.
- During the presentation, use [slido](https://slido.com) to ask questions. They will be answered at the end of the webinar, or will be available in a Q&A afterwards.
- **Only** use the **ZOOM chat** to report any **logistical problems**. If sound and/or images fail, it helps to log out and log back in 99% of the cases.
- The webinar will be **recorded** and the slides will be shared afterwards by e-mail.
- Signing up to [slido](https://slido.com) : surf to [slido.com](https://slido.com), event code = #smartspace  
→ you can switch between Q&A and Polls

slido

Where do you live?

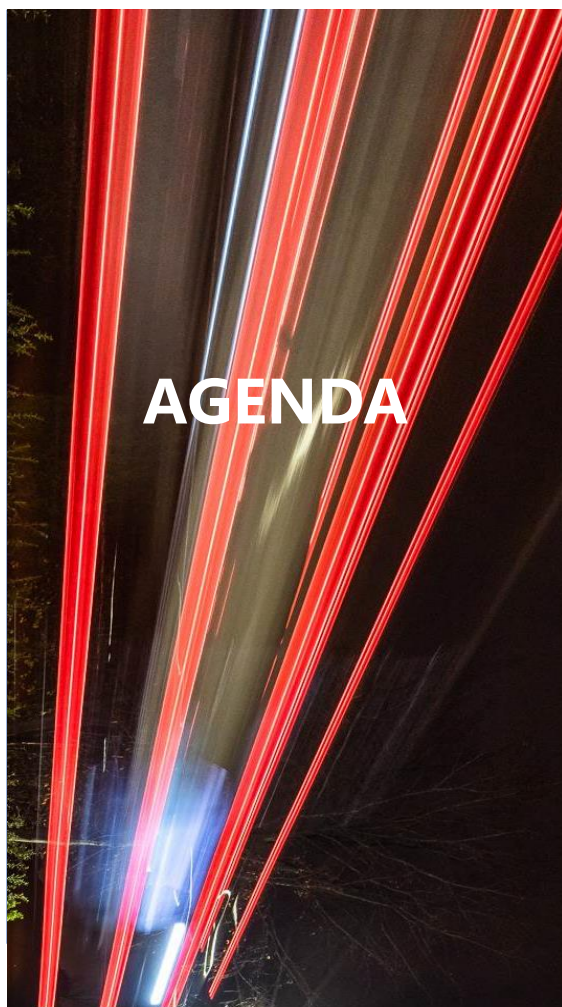
 Start presenting to display the poll results on this slide.

slido

Who are you?

 Start presenting to display the poll results on this slide.



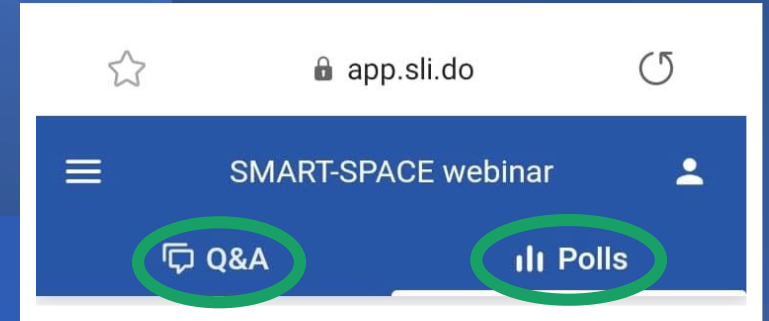


10:00	<b>Webinar intro</b>
10:05	<b>9 Must-haves for smart public lighting</b> <i>Swagata Chakraborty, Researcher TU/e Intelligent Lighting Institute &amp; Rianne Valkenburg, TU/e LightHouse</i>
10:25	<b>Building a smart public lighting system</b> <i>Annemijn Smid, Project Manager, SPIE</i>
10:45	<b>Testimonial of the city of Sint-Niklaas</b> <i>Sara Van den Bossche, Policy Advisor &amp; Davy Baetens, Advisor Public Domain, City of Sint-Niklaas</i>
11:00	<b>Stronger collaboration in urban lighting: the next steps</b> <i>Nikita Junagade, Knowledge and Communications Manager, LUCI Association</i>
11:15	<b>Q&amp;A</b>
11:25	<b>What's next?</b>

# 9 Must-haves for smart public lighting

Swagata Chakraborty, researcher TU/e Intelligent Lighting Institute  
&  
Rianne Valkenburg, TU/e LightHouse

Join at  
**slido.com**  
**#smartspace**





# **Building a smart public lighting system**

Annemijn Smid, Project Manager, SPIE

# Testimonial of the city of Sint-Niklaas

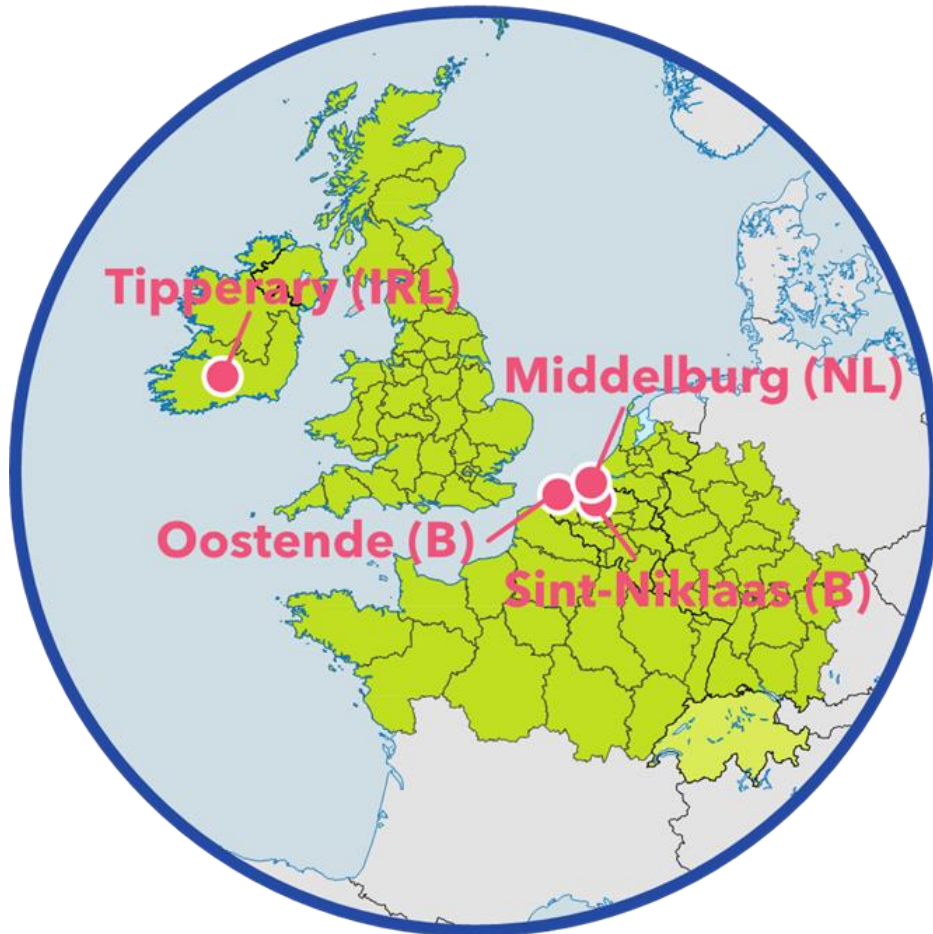
Sara Van den Bossche, Policy Advisor

&

Davy Baetens, Advisor Public Domain, City of Sint-Niklaas

# City of Sint-Niklaas

- 1 of 4 pilot cities
- City of 78.000 inhabitants in Flanders
- Fluvius = grid operator in Flanders & owner of our public lighting





# SMART-SPACE: why?



REDUCE ENERGY & CO2-  
EMISSIONS



ADAPTABLE LIGHTING

# Pilot Sint-Niklaas

01

Identify specific  
needs and  
requirements for  
public lighting

02

Set up specific use  
cases

03

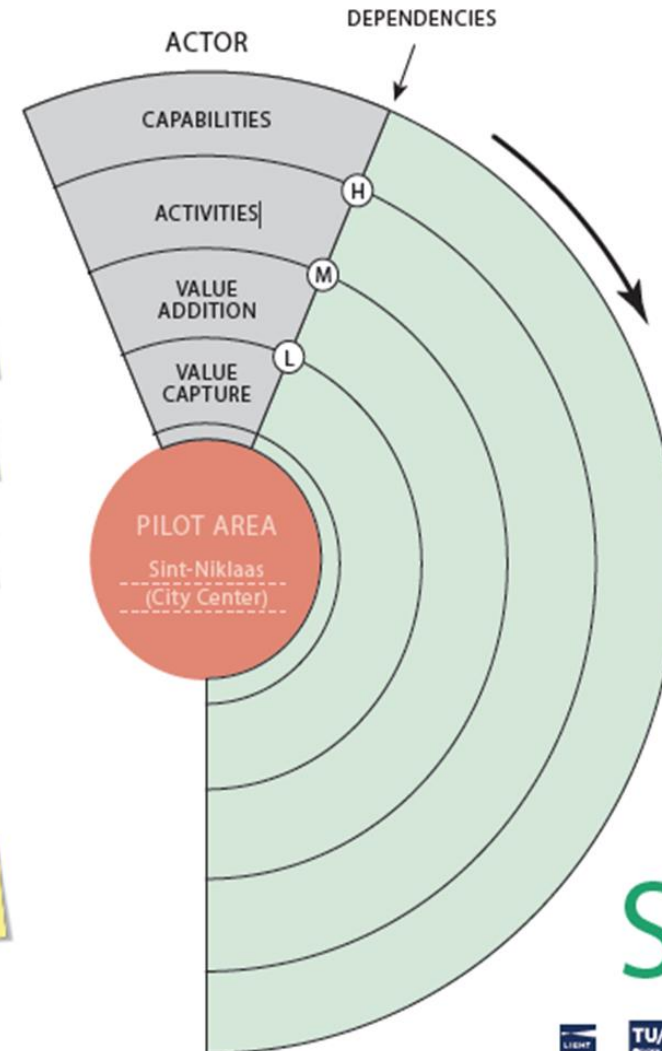
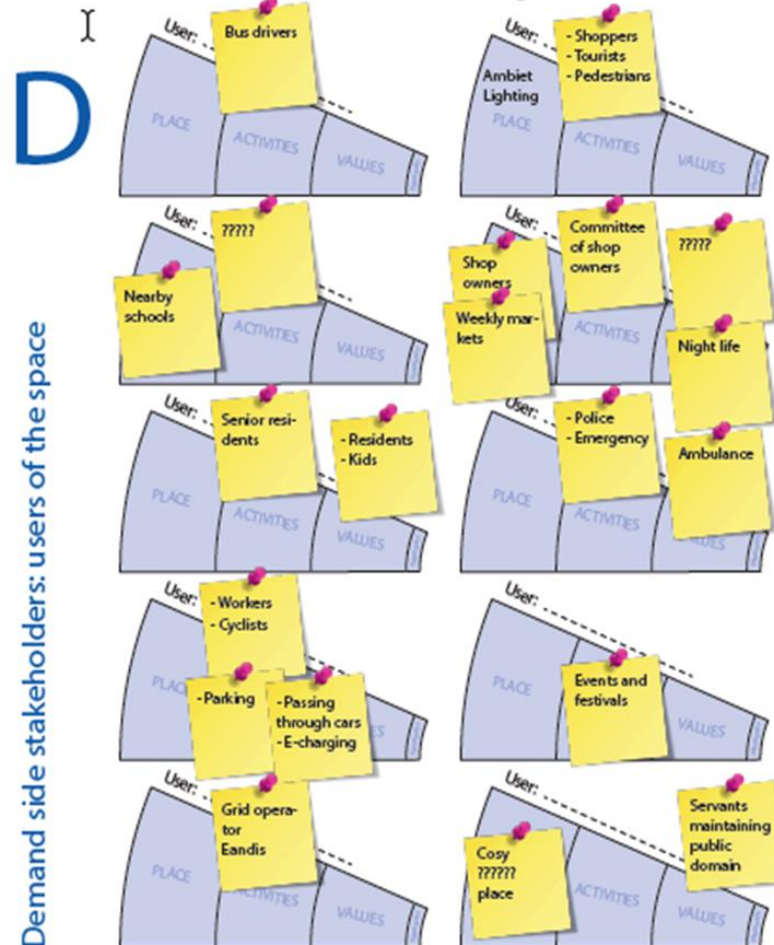
Install +/- 250 light  
poles with smart  
lighting system





# Identify requirements stakeholder mapping

## Stakeholder selection meeting



# Identify requirements: deep dives

- Aim: create a comprehensive understanding of needs and requirements from various stakeholders in the pilot sites (by TU/e)





# Set up specific use cases

## Use case 1: main shopping street





# Set up specific use cases

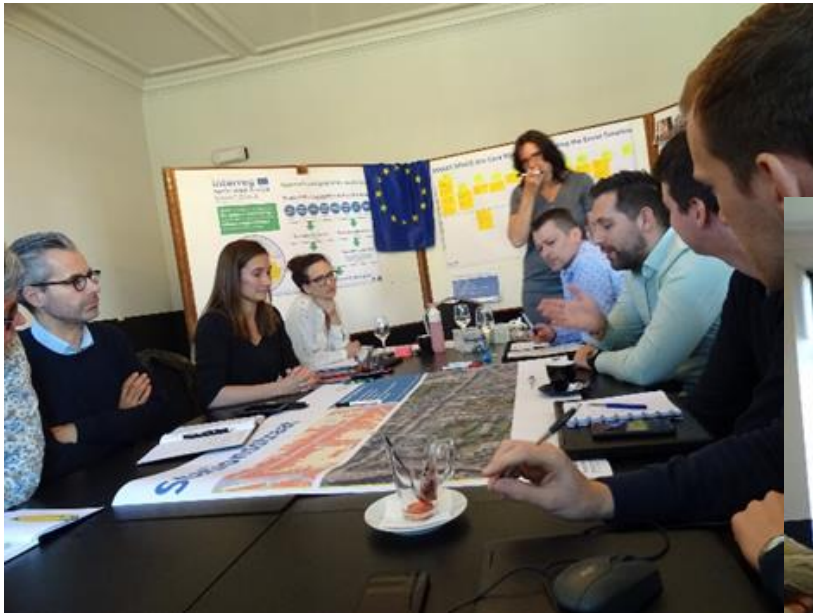
## Use case 2: nightlife area





# Use case workshop

- Aim: specify and visualise the direct use of the smart lighting services to address the needs identified in the deep dives (by TU/e)



SN1.6 (Un)Loading and commuting safely



SN1.1 Commuting safely on a temporary cycle lane



SN1.2 Playful interaction



SN1.4 Passing-by in a pleasant atmosphere and safely in the night



SN1.5 Enhanced night life experience



SN1.3 Enhanced shopping experience





SN3.3 Enhanced night life atmosphere at north side



SN3.1 Protecting safety



SN3.5 (Un)Loading and parking bikes safely



SN3.2 Enhanced night life atmosphere at south side



SN3.6 Inviting people to join



SN3.4 Time to go home

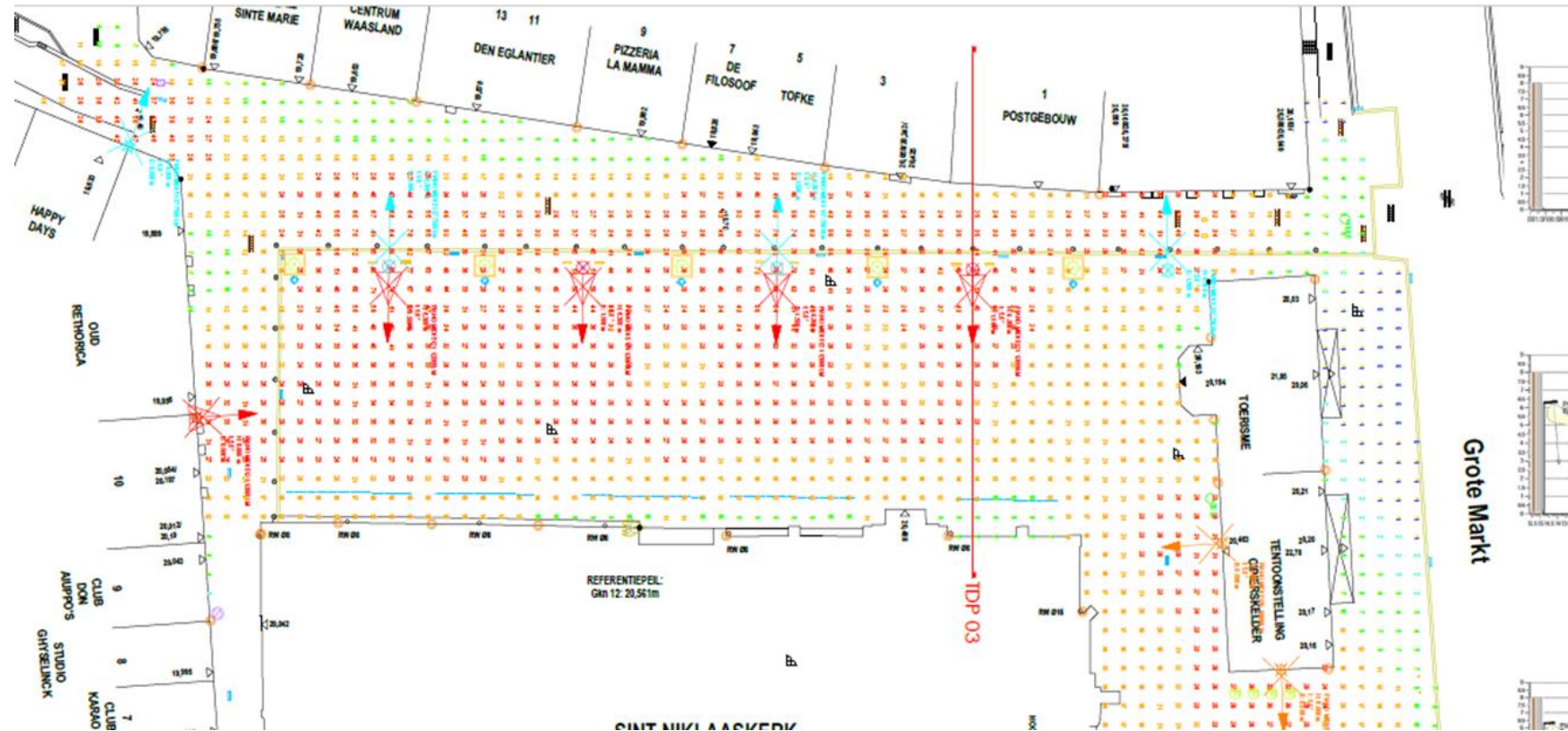


SN3.7 Passing-by safely



# Install light poles with smart lighting system

- Technical translation of the scenarios/use cases into a light plan (with Spie, Intemo, Fluvius)





# Install light poles with smart lighting system



## Lessons learned

- Get **experts** around the table: what is a smart lighting system, how does it work, what can sensors do, how do you manage it, necessary conditions,...
- Make an **integrated planning** from the start, with the necessary experts (e.g. for translation functional requirements into technical, privacy issues,...)
- Take the **privacy legislation** into account from the beginning

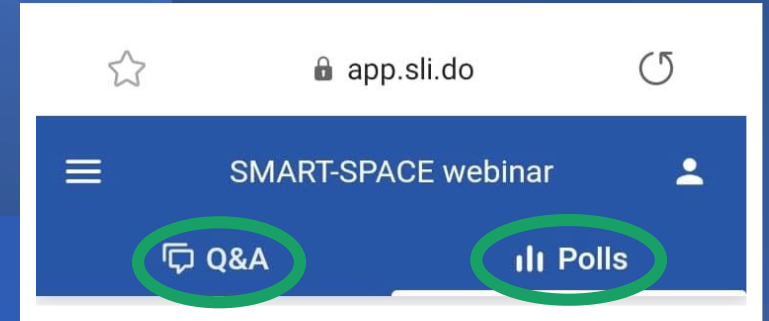


# **The need for stronger collaboration in urban lighting**

Nikita Junagade, Knowledge and Communications Manager, LUCI Association

Q&A

Join at  
**slido.com**  
**#smartspace**







# Audience Q&A Session

 Start presenting to display the audience questions on this slide.

# **SMART-SPACE**

## **What's next?**

Kristof Verhoest, Project Leader SMART-SPACE, City of Ostend

**WHAT'S**

**NEXT**

**SMART-SPACE Final Event**

T.b.d.



**Thank you for joining our webinar!**



## More info?

**Kristof Verhoest**

Project Leader SMART-SPACE  
City of Ostend

[Kristof.verhoest@oostende.be](mailto:Kristof.verhoest@oostende.be)  
+32497/051889

<https://www.nweurope.eu/smart-space>